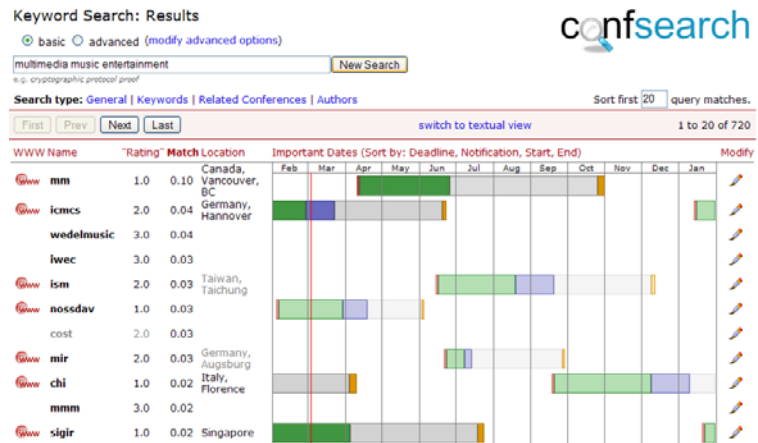


Lab/SA/MA: Extending confsearch

A scientific conference is a (typically annual) event, where the academic community specialized in a certain field gathers to present and discuss its most recent research results. Such conferences play an important role in science as well as in the life of every researcher. Experience shows that choosing the right conference to publish a new result is not always a simple task. Many factors, such as thematic scope, deadline for submission, quality, or location have to be considered. Unfortunately, traditional search engines do a rather bad job in finding appropriate conferences. To overcome these problems, we have implemented *confsearch* (www.confsearch.org), which is a collaborative web-application and search engine for computer science conferences.



Confsearch is based on data of *DBLP* (<http://dblp.uni-trier.de>), a digital library project containing the publications of a large number of computer science conferences. It currently offers different search modes, such as searching for conferences by keyword, by authors, or by other (similar) conferences. Moreover, users are able to insert meta-data, such as deadlines, web-links, or conference locations in a collaborative approach. Such data can then also be used for search. The goal of this project is to extend the current application. It can thereby touch different domains:

- UI related topics (presentation of multimodal search results, integration with Google maps, etc.)
- Search (merging results of different search engines, etc.)
- Data mining (semi-automatic retrieval of meta-data from the web, making conferences not part of *DBLP* available to our search algorithms, etc.)

Clearly, you are also welcome to bring your own ideas for features and extensions. Dependent on which area you choose to look into, the project will have mostly practical character or might include a considerable theoretical part as well.

Interested? Please contact us for further details!

Contact:

1. Kuhn Michael: kuhnm@tik.ee.ethz.ch, ETZ G61.4, phone 044 632 77 30
2. Roger Wattenhofer: wattenhofer@tik.ee.ethz.ch, ETZ G63, phone 044 632 63 12